

1 **Adherence to Mediterranean diet is associated with methylation changes in inflammation-related genes in peripheral blood**  
2 **cells**

3 Arpón A<sup>1,2</sup>, Riezu-Boj JI<sup>1,2,4</sup>, Milagro F<sup>1,2,3</sup>, Razquin C<sup>3,4,5</sup>, Martínez-González MA<sup>3,4,5</sup>, Corella D<sup>3,6</sup>, Estruch R<sup>3,7</sup>, Casas R<sup>3,7</sup>, Fitó M<sup>3,8</sup>,  
4 Ros E<sup>3,7</sup>, Salas-Salvadó J<sup>3,9</sup>, Martínez JA<sup>1,2,3,4</sup> \*

5 <sup>1</sup> Universidad de Navarra, Department of Nutrition, Food Sciences and Physiology; Irunlarrea 1, 31009, Pamplona, Spain

6 <sup>2</sup> Universidad de Navarra, Centre for Nutrition Research, Irunlarrea 1, 31009, Pamplona, Spain

7 <sup>3</sup> Spanish Biomedical Research Centre in Physiopathology of Obesity and Nutrition (CIBERObn), Institute of Health Carlos III,  
8 Madrid, Spain

9 <sup>4</sup> Navarra Institute for Health Research (IdiSNA), Pamplona, Spain

10 <sup>5</sup> Universidad de Navarra, Department of Preventive Medicine and Public Health, Irunlarrea 1, 31009, Pamplona, Spain

11 <sup>6</sup> Department of Preventive Medicine and Public Health, University of Valencia, Valencia, Spain

12 <sup>7</sup> Department of Endocrinology and Nutrition, Institut d'Investigacions Biomèdiques August Pi i Sunyer (IDIBAPS), Hospital Clinic,  
13 University of Barcelona, Barcelona, Spain

14 <sup>8</sup> Cardiovascular and Nutrition Research Group, Institut de Recerca Hospital del Mar, Barcelona, Spain

15 <sup>9</sup> Human Nutrition Department, Hospital Universitari Sant Joan, Institut d'Investigació Sanitaria Pere Virgili, Universitat Rovira i  
16 Virgili, Reus, Spain

17 <sup>10</sup> Madrid Institute of Advance Studies (IMDEA), IMDEA Food, Madrid, Spain

18 \*Corresponding author. Email address: jalfmtz@unav.es; Tel.: +34 948425600; fax: +34 948425740.

19  
20 ORCID ID Arpón A: 0000-0002-9508-0431

21 ORCID ID Riezu-Boj JI: 0000-0002-1885-8457

22 ORCID ID Milagro F: 0000-0002-3228-9916

23 ORCID ID Martínez JA: 0000-0001-5218-6941

24

25 **ABSTRACT**

26 Epigenetic processes, including DNA methylation, might be modulated by environmental factors such as the diet, which in turn  
27 have been associated with the onset of several diseases such as obesity or cardiovascular events. Meanwhile, Mediterranean diet  
28 (MedDiet) has demonstrated favourable effects on cardiovascular risk, blood pressure, inflammation, and other complications  
29 related to excessive adiposity. Some of these effects could be mediated by epigenetic modifications. Therefore, the objective of  
30 this study was to investigate whether the adherence to MedDiet is associated with changes in the methylation status from

31 peripheral blood cells. A subset of 36 individuals were selected within the PREvención con Dieta MEDiterránea (PREDIMED)-  
32 Navarra study, a randomised, controlled, parallel trial with three groups of intervention in high cardiovascular risk volunteers, two  
33 with a MedDiet and one low-fat control group. Changes in methylation between baseline and five years were studied. DNA  
34 methylation arrays were analysed by several robust statistical tests and functional classifications. Eight genes related to  
35 inflammation and immunocompetence (*EEF2*, *COL18A1*, *IL4I1*, *LEPR*, *PLAGL1*, *IFRD1*, *MAPKAPK2*, *PPARGC1B*) were finally selected  
36 as changes in their methylation levels correlated with adherence to MedDiet and because they presented sensitivity related to a  
37 high variability in methylation changes. Additionally, *EEF2* methylation levels positively correlated with concentrations of TNF- $\alpha$   
38 and CRP. This report is apparently the first showing that adherence to MedDiet is associated the methylation of the reported  
39 genes related to inflammation with a potential regulatory impact.

40  
41 **Key words: Mediterranean, diet, adherence, methylation, DNA, epigenetics**

## 42 43 INTRODUCTION

44 Individual phenotypical features results from the interplay among genetics, epigenetics and environmental factors, including the  
45 diet [30]. In this context, epigenetic marks involve heritable changes that cannot be explained through variations in DNA sequence  
46 and can potentially be transmitted to the offspring [29]. Epigenetics signatures include DNA methylation, histone modifications,  
47 nuclear proteins action as epigenetic regulators, genomic imprinting, non-coding RNAs such as microRNAs (miRNAs), and non-  
48 covalent mechanisms [30]. These epigenetic modifications may lead to chromatin structure impairments in terms of accessibility  
49 and compactness, which may regulate gene expression and provide mechanisms for cellular diversity [38]. Actually, epigenetic  
50 marks are influenced by environmental factors, which have been associated to several diseases and complications such as  
51 inflammation, obesity, insulin resistance, type 2 diabetes, cardiovascular diseases, immune diseases, apart from being implicated  
52 in embryogenic development, aging and cancer [10].

53  
54 DNA methylation is one of the most studied epigenetic processes and, in mammals, primarily occurs by the addition of a methyl  
55 group in the carbon 5' position of a cytosine, which is adjacent to a guanine, forming a methylated CpG dinucleotide [38, 40].  
56 Interestingly, nutrients and components of the diet are able to modify gene expression at the transcriptional level through changes  
57 in DNA methylation [3, 10, 18]. Indeed, Milagro *et al.*, (2013) reviewed nutritional factors that may cause metabolic effects acting  
58 through epigenetic processes, such as methyl donors, vitamins, fatty acids or polyphenols [30]. For instance, some studies have  
59 evidenced the influence of n-3 and n-6 polyunsaturated fatty acids (PUFA), such as eicosapentaenoic [8, 14], docosahexaenoic [8,  
60 23] and arachidonic [21], on DNA methylation. Folic acid supplementation in juvenile-pubertal period in rodents induced

61 epigenetic and phenotypic changes, associated with an increase of PPAR- $\alpha$  gene methylation in liver and a decrease of insulin  
62 receptor methylation in adipose tissue, with reciprocal changes in gene expression [5]. Another example is genistein, which  
63 reduces methylation of *WNT5a* and *BTG3* promoters in both cancerous and renal cells [24].

64  
65 Additionally, obesity and accompanying comorbidities have been highly associated to epigenetic changes induced by the dietary  
66 intake [19]. For example, subjects with greater response to calorie restriction in a weight loss intervention presented a  
67 hypomethylation of the promoter region of tumour necrosis factor  $\alpha$  (TNF- $\alpha$ ) and leptin (LEP) in peripheral blood mononuclear  
68 cells [6] and in subcutaneous adipose tissue [11]. Thus, the progress in the epigenetic field and the study of nutritional biomarkers  
69 is contributing to define new roles of nutrients in health and disease, for the prevention of these diseases and implementation of  
70 precision treatment strategies [17, 22].

71  
72 Traditionally, Mediterranean diet (MedDiet) has been associated with a protective effect against cardiovascular diseases [45], but  
73 no large primary prevention trials with clinical events as end-point was performed until 2003 when PREvención con Dieta  
74 MEDiterránea (PREDIMED) study arose with the purpose of analysing the effect of a MedDiet intervention on prevention of  
75 cardiovascular diseases [16]. The results of the trial showed that the MedDiet was associated with a decrease of cardiovascular  
76 events and with a favourable effect on blood pressure, insulin sensitivity, lipid profile, lipoprotein particles, inflammation,  
77 oxidative stress and metabolic syndrome manifestations [15, 27, 31].

78  
79 Our hypothesis was that phenotypic changes observed after an intervention with MedDiet could be associated with epigenetic  
80 modifications in certain genes. Because of that, the objective of this epigenome-wide study was to investigate whether the  
81 adherence to MedDiet along the intervention is related to methylation changes in PREDIMED-Navarra participants.

## 82 83 **MATERIALS AND METHODS**

### 84 **Study design and participants**

85 The current trial was conducted within the framework of the PREDIMED study, which was a multicenter, randomized, primary  
86 prevention feeding trial with blinded assessment of end points carried out in Spain with the aim of evaluating the effects of the  
87 MedDiet on primary cardiovascular prevention ([www.predimed.es](http://www.predimed.es)). The protocol and recruitment methods have been described  
88 in detail elsewhere [16, 26]. All participants provided written informed consent, and the protocol was approved by the Research  
89 Ethics Committees at all recruiting centres in compliance with the Helsinki Declaration guidelines. This trial has been registered  
90 with the International Standard Randomised Controlled Trial Number (ISRCTN of London, England: 35739639).

91

92 Eligible participants were men aged 55–80 and women aged 60–80 years without any previous history of cardiovascular disease.  
93 At baseline, participants should fulfil at least one of the following two criteria: type-2 diabetes or three or more cardiovascular  
94 risk factors: smoking, hypertension, elevated low-density lipoprotein, cholesterol levels, low high-density lipoprotein cholesterol  
95 levels, overweight or obesity, or a family history of premature coronary heart disease. Participants were randomized to one of  
96 three nutrition interventions: a MedDiet supplemented with extra virgin olive oil (EVOO), a MedDiet supplemented with mixed  
97 nuts, or a low-fat diet (control group). All groups received dietary instructions and a previously validated fourteen-item dietary  
98 screener (p14) was used to assess adherence to MedDiet at baseline and at the last visit [37]. This questionnaire comprises 14  
99 questions about frequency of consumption of several recommended foods in MedDiet (**Supl. Table S1**). Each question can give  
100 one or zero points depending on whether the recommendations are accomplished or not, obtaining a maximum of 14 points which  
101 represent the highest adherence to MedDiet, and a minimum of zero points. Other questionnaires (medical conditions, food  
102 consumption and composition, physical activity) were completed as described elsewhere [16]. Data of anthropometric measures  
103 and body composition (body weight, waist circumference, body mass index) and blood pressure were collected in the same  
104 consultations [31]. Plasma, serum and buffy-coat were stored and biochemical features (glycaemia, cholesterol levels, and  
105 triglycerides) were measured as previously published [31]. Composition of different types of leukocytes (neutrophils, lymphocytes,  
106 monocytes, eosinophils and basophils) in whole blood was analysed by ABX Pentra 60 hematology analyser (Horiba, Madrid,  
107 Spain).

108

109 For the present secondary analysis, 36 participants were selected from the recruitment centre at the University of Navarra. These  
110 volunteers were selected following different criteria. Firstly, they were sifted by smoking (non-smokers or former-smokers) and  
111 by age (between 60 and 70 years old). Then, six women and six men were randomly chosen from each diet. Data from patients  
112 (questionnaires, anthropometry, blood pressure, p14 score, blood samples and biochemical measures) were collected at baseline  
113 and at five years of intervention. Methylation analysis was also performed at baseline and at five-year follow-up.

114

#### 115 **DNA extraction and DNA methylation analyse**

116 After overnight fasting, venous blood samples from baseline and five years of intervention were drawn on EDTA tubes. Samples  
117 were centrifuged at 2000 *xg*, 4 °C, 15 min and buffy-coats were collected. Aliquots were coded and kept refrigerated until they  
118 were stored at -80 °C. DNA was extracted from buffy-coat with MasterPure™ DNA Purification Kit for Blood (Epicentre, Madison,  
119 WI, USA) according to manufacturer's instructions and shipped on dry ice to Unidad de Genotipado y Diagnóstico Genético from  
120 Fundación Investigación Clínico de Valencia (INCLIVA), where microarray preparation, hybridization and scanning was performed.

121 As previously described [25], DNA was quantified using PicoGreen double-stranded DNA (dsDNA) Quantification Reagent®  
122 (Invitrogen, Carlsbad, CA, USA). EZ DNA methylation kit (Zymo Research, Irvine, CA, USA) was used to bisulphite modification of  
123 500 mg of genomic DNA according with manufacturer's protocol. Bisulphite-treated genomic DNA was amplified and hybridized  
124 using the Infinium HumanMethylation450 BeadChip (Illumina, San Diego, CA, USA) and scanned using the Illumina hiScanSQ  
125 platform. The intensity of the images was extracted with the GenomeStudio Methylation Software Module (v 1.9.0, Illumina, San  
126 Diego, CA, USA).

### 127

#### 128 **Treatment of methylation raw data, Ingenuity Pathway Analysis and selection**

129 Microarray data were normalized in R by a categorical subset quantile normalization method using the pipeline developed by  
130 Touleimat & Tost (2012) in a previous paper [41]. Afterwards, Pearson correlations between methylation changes (five years –  
131 baseline) and p14 differences (five years – baseline) were calculated in order to choose those CpGs that were differentially  
132 methylated and also correlated with the changes in adherence to MedDiet, assessed by p14. Methylation change was chosen  
133 instead of methylation at five years as a way of correction, in order to avoid the influence of methylation at baseline. From all the  
134 significant CpGs obtained (n=12990), and in order to control the type I error rate, a more restrictive selection was performed using  
135 the r-value from correlations  $>|0.5|$ , which corresponds to a  $p < 0.0019$ . Then, the selected CpGs were submitted to a two-winged  
136 analysis. Initially, they were analysed with Ingenuity Pathway Analysis (IPA) software, (Qiagen Redwood City, CA, USA,  
137 www.ingenuity.com), using predefined pathways and functional categories of the Ingenuity Knowledge Base in order to detect  
138 associated pathways and relevant gene regulatory networks [43]. Pathway analyses were performed with IPA Core Analysis  
139 module. Canonical pathways with a  $p < 0.05$  after Fisher's test were defined as a statistically significant overrepresentation of input  
140 genes in a given process. Secondly, CpGs were selected because: 1) they presented the highest standard deviation of the mean of  
141 methylation changes, and subsequently, the highest variability ( $>5\%$  of methylation changes); this method is considered a robust  
142 and consistent process of filtering beta values of methylation with high sensitivity to changes [39]; and 2) there was previous  
143 evidence that these genes where the CpGs were located expressed in blood cells. Afterwards, a manual search in the scientific  
144 literature for the genes was performed in order to classify them into biological function groups for further analysis. A diagram of  
145 the analytic process is reported in the Supplementary Material (**Fig S1**).

#### 146

#### 147 **ELISA analysis**

148 Soluble intercellular cell adhesion molecule-1 (sICAM-1, Ref. DCD540), vascular cell adhesion molecule-1 (VCAM-1, Ref. DVC00),  
149 C-reactive protein (CRP, Ref. DCRP00), TNF- $\alpha$  (Ref. HSTA00D) and LEP (Ref. DOBR00) were measured using standard enzyme-linked  
150 immunosorbent assay (ELISA) in EDTA plasma samples at baseline and at five years according the manufacturer's specific protocol.

151 All ELISA kits were purchased from R&D Systems Inc. (Minneapolis, MA, USA). Protein concentrations were measured by Multiskan  
152 Spectrum from Thermo Scientific (Waltham, MA, USA). The selection of these molecules was based on the observed decrease of  
153 VCAM-1, sICAM-1 and CRP in the MedDiet groups in PREDIMED trial [7, 15, 35] and the described relationship between TNF- $\alpha$  and  
154 the action of two selected genes (eukaryotic elongation factor 2 (*EEF2*) and mitogen-activated protein kinase (MAPK)-activated  
155 protein kinase 2 (*MAPKAPK2*). LEP was chosen because it is the ligand of LEP receptor encoded by another selected gene (*LEPR*).

## 157 **Statistical analysis**

158 Participants were characterised comparing the differences (five years-baseline) of some anthropometric and biochemical features,  
159 blood pressure and p14 score among the three groups using ANOVA test. Tukey's multiple comparison test was applied for p14  
160 score analysis.

161  
162 Differences in the composition of types of leukocytes between five years and baseline were correlated (Pearson) with p14 changes  
163 and with methylation changes of the eight CpGs selected. Benjamini-Hochberg correction was applied to control the false  
164 discovery rate.

165  
166 For ELISAs statistical analysis, participants were categorised into two groups of p14 at five years by the median (Q1 and Q2) and  
167 then, a Student T test, Mann-Whitney U test or Median test, as appropriate, was carried out in order to compare the quantity of  
168 protein in both groups. One-tailed p-values were selected as the MedDiet has been previously described with inflammatory  
169 beneficial effects [27] and therefore, a decrease (or at least, no differences) was expected in the concentrations of inflammatory  
170 biomarkers in the Q2 group. Correlations (Pearson or Spearman, when appropriate) between the methylation data of selected  
171 CpGs and protein concentration obtained in ELISAs were also performed. For analysing the correlations, data from both baseline  
172 and five years were included.

173  
174 In general, the Shapiro-Wilk analysis was employed to test normality. R Studio [34] was used for the analysis of Pearson  
175 correlations during the selection process. Statistics and graphs were performed using STATA version 14.0 (Stata Corp, College  
176 Station, TX, USA) and GraphPad Prism 6 (Graph-Pad Software, San Diego, CA, USA). The significance level was set at  $p < 0.05$ .

## 178 **RESULTS**

179 Participants showed no differences among the three intervention groups in age and changes of weight, waist circumference, body  
180 mass index, glycaemia, cholesterol levels, triglycerides and arterial pressure (**Table 1**). Variations among groups in composition of

181 types of leukocytes were also not observed (data not shown). However, when analysing the adherence to MedDiet assessed by  
182 p14, at baseline, all groups presented a similar p14 with non-significant differences. However, after five years, the MedDiet groups  
183 showed a significantly higher p14, and, consequently, a higher adherence to MedDiet in comparison with the control group  
184 (MedDiet groups in conjunction (11.8) vs. low-fat diet (9.8);  $p < 0.001$ ). When analysing each group separately, both MedDiet  
185 groups presented significant differences in p14 between five years and baseline, whereas in the control group such differences  
186 were not found (**Fig 1A**). Regarding inflammation biomarkers (**Supl. Table S2**), results showed a significant decrease of TNF- $\alpha$   
187 ( $p = 0.024$ ), sICAM-1 ( $p = 0.033$ ) and CRP ( $p = 0.044$ ) in the group with higher p14 at five years of intervention, while a trend towards  
188 a decrease for VCAM-1 molecule ( $p = 0.051$ ) was found (**Fig 1B**). However, non-significant differences were observed for LEP values  
189 (data not shown).

190  
191  
192 Pearson correlations allowed the identification of CpGs that were differentially methylated and correlated with p14 changes. From  
193 all the significant CpGs, 316 were selected (**Supl. Table S3**) with the criteria of  $r > |0.5|$ , corresponding to a  $p < 0.002$ . These  
194 selections are explained in detail in *Materials and methods*. These 316 CpGs were two-winged analysed combining computational  
195 and literature approaches.

196  
197 For the first approach, the 316 CpGs were further studied by IPA in order to feature the associated canonical pathways (**Fig 2**).  
198 Some of the pathways were related to inflammation, such as *Role of JAK1, JAK2 and TYK2 in Interferon Signalling*, *STAT3 Pathway*,  
199 *Mitochondrial L-carnitine Shuttle Pathway*, *AMPK Signalling* and *Role of JAK family kinases in IL-6-type Cytokine Signalling*),  
200 whereas others were involved in metabolism such as *Histamine Biosynthesis*, *GDP-L-fucose Biosynthesis I*, *Glycine Biosynthesis I*  
201 and *Coenzyme A Biosynthesis*.

202  
203 For the second approach, another selection strategy was performed as described in materials and methods. From all the 316 CpGs,  
204 50 were selected (**Supl. Table S4**). Afterwards, the 50 CpGs were classified into biological function groups (**Fig 3**). Those functions  
205 were immunocompetence/inflammation, adipogenesis, diabetes/insulin secretion, metabolism, methylation, angiogenesis, cell  
206 dynamics, cell survival/cell death, gene expression, cell differentiation/cell growth, blood pressure regulation, and ubiquitination.  
207 Some of the genes were categorised in more than one group because they presented different functions depending on factors  
208 such as the tissue where they were expressed. Further investigation was focused on eight genes (**Supl. Table S2**) from the  
209 immunocompetence-function group based on bibliographic search. The selected genes were: *EEF2*, *COL18A1* (collagen type XVIII  
210 alpha 1), *IL4I1* (interleukin 4-induced gene-1), *LEPR*, *PLAGL1* (pleiomorphic adenoma gene-like 1), *IFRD1* (interferon-related

developmental regulator 1), *MAPKAPK2* and *PPARGC1B* (peroxisome proliferator-activated receptor gamma, coactivator 1 beta). Correlation graphs between methylation and p14 changes of these eight genes are reported (Fig 4). Interestingly, *EEF2*, *IL4I1* and *PPARGC1B* presented a negative association whereas *COL18A*, *LEPR*, *PLAGL1*, *IFRD1* and *MAPKAPK2* had a positive association with p14. Methylation changes included from 60 to -40 for *EEF2* as the maximum interval and from 10 to -30 for *PPARGC1B* as the minimum interval.

Some inflammation-related molecules such as TNF- $\alpha$ , VCAM-1, sICAM-1 and CRP, and in addition LEP, were measured. The purpose of this assay was to assess whether a higher or a lower methylation induced changes in these protein concentrations. As a result, correlations between measured proteins and methylation data at baseline and at five years were performed. Results showed correlations between (A) *LEPR* methylation and concentration of LEP, (B) *EEF2* methylation and concentration of TNF- $\alpha$ , and (C) *EEF2* methylation and concentration of CRP (Fig. 5).

Since methylation measured in peripheral blood cells (PBCs) can depend on variations in the types of leukocytes, correlation studies were performed between each type of cell (five years-baseline) and p14 changes or methylation changes of the selected eight CpGs, showing no association for any comparison.

## DISCUSSION

The current study demonstrates for the first time that following a MedDiet is associated with the differential methylation of the selected genes: *EEF2*, *COL18A1*, *IL4I1*, *LEPR*, *PPARGC1B*, *MAPKAPK2*, *IFRD1* and *PLAGL1*. Along these lines, other preliminary studies focused on selected genes (*FTO* and *TCF7L2*) in the PREDIMED-Valencia trial (n=195 individuals) reported that intervention with MedDiet was associated with changes in methylation at 1-year [12]. Likewise, when focusing on *FNDC5* (irisin gene) (n=181), higher adherence to MedDiet at baseline was associated with statistically significant differences in methylation at baseline [13]. Thus, this study adds further insights to previous reports where environmental factors, including diet, were able to modify the epigenome [3].

Phenotypical changes in anthropometric and biochemical measurements among the participants in the three dietary groups were not reported. Regarding adherence to the MedDiet, our results showed that, although baseline p14 scores were similar among the participants, intervention with MedDiet led to a significant increase in this score. In contrast, participants in the low-fat diet presented non-significant differences. Thus, the p14 score was demonstrated to be a good method for assessing adherence to the MedDiet [37]



241

242 The MedDiet has shown prevention capacity against cardiovascular diseases and associated risk factors such as inflammation,  
243 hypertension, and hyperlipidaemia, among others [15, 27]. On the other hand, variations in DNA methylation have been related  
244 to several diseases such as obesity, type 2 diabetes, cancer, and cardiovascular diseases [10]. Hence, the MedDiet could be  
245 associated with variations in DNA methylation, which in turn may cause changes in the expression of some genes associated with  
246 these diseases. In fact, the genes with higher variability in methylation changes selected from our study were linked to functions  
247 that are intimately related to those diseases. Such functions are immunocompetence/inflammation, adipogenesis,  
248 diabetes/insulin secretion, metabolism, methylation, angiogenesis, cell dynamics, cell survival/cell death, gene expression, cell  
249 differentiation/cell growth, blood pressure regulation, and ubiquitination. Canonical pathway screening from IPA showed that  
250 genes with methylation changes that correlated with p14 changes were mainly associated with pathways of inflammation and  
251 metabolism. From all these groups, eight genes from immunocompetence/inflammation were selected for further bibliographic  
252 research as methylation levels were measured in DNA extracted from PBCs. The studied eight genes were *EEF2*, *COL18A1*, *IL4I1*,  
253 *LEPR*, *PPARGC1B*, *MAPKAPK2*, *IFRD1* and *PLAGL1*. All of them have been described performing functions associated with  
254 inflammation, which can be related to the described favourable effects of the MedDiet on the immune system [27]. For example,  
255 *EEF2* controls TNF- $\alpha$  production in macrophages, regulating the inflammatory response and triggering several intracellular  
256 signalling cascades that influence cell survival, death, differentiation, proliferation, and migration [20]; *IL4I1* can inhibit the  
257 proliferation of CD3-stimulated T lymphocytes [2, 48]; and *MAPKAPK2* is involved in the production of TNF- $\alpha$  and other cytokines,  
258 and in the granulocyte infiltration [36]. In this context, several studies derived from PREDIMED trial have demonstrated that  
259 inflammatory biomarkers, such as Interleukin 6, VCAM-1, sICAM-1, and CRP, decrease in MedDiet groups [7, 15, 35]. In fact, the  
260 quantitative analysis of some of these molecules (CRP, sICAM-1, VCAM-1) and TNF- $\alpha$  in this study confirms that individuals with  
261 higher adherence to MedDiet presented lower inflammatory biomarkers. Therefore, the beneficial inflammatory effects of the  
262 MedDiet could be mediated by changes in the methylation levels of genes related to inflammation. Indeed, an association between  
263 *EEF2* methylation and both inflammatory biomarkers TNF- $\alpha$ , and CRP, was observed in the study, suggesting that changes in *EEF2*  
264 methylation drive to a variation in *EEF2* expression, which might result in the regulation of the production of inflammatory  
265 molecules. In fact, *EEF2* has been described controlling TNF- $\alpha$  elongation [20]. Therefore, an increase in *EEF2* methylation would  
266 produce changes in its expression and thus, in the production of TNF- $\alpha$ . Moreover, methylation of *LEPR* and concentration of LEP  
267 were also associated, suggesting a likely regulation of the interaction between the receptor and its ligand through epigenetic  
268 mechanisms. Zhang et al. (2001) described that there is a *LEPR*-mediated feedback suppression on *LEP* expression [49]. Hence, in  
269 order to be in accordance with the obtained results, an increase in *LEPR* methylation would lead to an increase in *LEPR* expression  
270 and thus, to a decrease in LEP production.

271

272 The mentioned gene functions also include actions related to adipogenesis and metabolism. For example, *LEPR* absence leads to  
273 severe obesity and metabolic disorders [33]; *PPARGC1B* is associated with type 2 diabetes [42] and related to brown adipocytes  
274 [32]; and *IFRD1* is a unique mediator of nutrient absorptive and metabolic adaptation following gut resection and its  
275 overexpression in the intestine alters growth, metabolic rate, adiposity, and intestinal triglyceride absorption [44]. Nevertheless,  
276 the methylation levels were measured in PBCs. It may be possible that these cells could be acting as proxies for other tissues that  
277 are less accessible but clinically important [4] such as adipocytes. The analysis of these tissues in order to study whether the  
278 methylation levels match those observed in PBCs would be a step forward for identifying epigenetic biomarkers. In this context,  
279 further investigation of nutritional biomarkers would be useful to identify susceptibility to suffering from diseases, or even to  
280 guide personalized nutritional interventions [11].

281

282 Methylation changes in this study have shown both a positive and a negative association with p14 changes. Traditionally, increases  
283 in methylation have been associated with lower gene expression and viceversa. However, it has recently been described that this  
284 relationship is not always valid as it depends on the location of the CpG inside the gene and in the gene itself. Thus, some genes  
285 present higher or lower expression when there is an increase or decrease in their methylation, respectively; however, this pattern  
286 is not universal [28, 46].

287

288 Nevertheless, there are some limitations in this study. Firstly, it could be useful to increase the number of participants to raise the  
289 statistical power and more reliable results. Secondly, type I error cannot be discarded due to the high number of test performed  
290 in this study and that corrections for multiple comparisons were implemented, but an specific effort has been made to analyse  
291 data with different robust biological criteria and statistical strategies. Thirdly, although correlation between the different types of  
292 leukocytes and the variables investigated in this study was assessed in order to avoid influences in methylation changes, correction  
293 for cell type was not applied. Since there were no associations between the types of leukocytes and the variables studied,  
294 correction for cell type was not carried out. Finally, gene expression could be evaluated and related to methylation changes in  
295 order to determine how the diet influences the general health status. Although this analysis was not performed, it has been  
296 described in the literature that some foods and components of the diet are able to modify the expression of some of the genes  
297 selected in the present study in other contexts. For instance, two isothiocyanates obtained from broccoli (sulforaphane and iberin)  
298 increased expression of *PLAGL1* in stromal cells, possibly being related to a reduced risk of prostate cancer [9]. Diet  
299 supplementation with flaxseed increased endostatin (fragment of *COL18A1*) levels in breast tissue cultures [1]. As for fucoxanthin,  
300 a carotenoid found in brown seaweed, macroalgae, and diatoms, Yoshiko & Hoyoku (2007) described an increase in *IFRD1*

301 expression in HepG2 cells [47]. Therefore, it is likely that the methylation changes observed in this study correlated with changes  
302 in the expression of the selected genes, although a further analysis is needed to corroborate this hypothesis.

303  
304 In conclusion, this study shows that the MedDiet is associated with changes in the epigenome through methylation mechanisms  
305 in PBCs in a notable way in at least 50 genes. Some of these changes in methylation levels occurred in genes related to  
306 inflammation, but with other possible functions related to adipogenesis, metabolism, angiogenesis, and diabetes, among others.  
307 Therefore, MedDiet may be exerting a beneficial effect on health through anti-inflammatory actions that might be potentially  
308 mediated by epigenetic mechanisms. Further studies with a larger sample size are needed to confirm these findings.

### 309 310 **ACKNOWLEDGEMENTS**

311 Authors are very grateful to CIBERobn (CB12/03/30002 to J.A.M) for financial help and scientific support, as well as to the  
312 PREDIMED project (Red PREDIMED-RETIC RD06/0045).

313 A.A was supported by a grant from Centro de Investigación en Nutrición (Universidad de Navarra) until august 2016, and from  
314 that day, by a "Formación de Profesorado Universitario" predoctoral fellowship from Ministerio de Educación, Cultura y Deporte  
315 (FPU15/02790). We specially thank Goñi-Echeverria E for his help in the statistical analysis.

### 316 317 **REFERENCES**

- 318 1. Åberg UW, Saarinen N, Abrahamsson A, *et al.* (2011) Tamoxifen and flaxseed alter angiogenesis regulators in normal breast  
319 tissue in vivo. *PLoS One*, 6(9): e25720
- 320 2. Boulland ML, Marquet J, Molinier-Frenkel V *et al.* (2007) Human IL411 is a secreted L-phenylalanine oxidase expressed by  
321 mature dendritic cells that inhibits T-lymphocyte proliferation. *Blood*, 110(1): 220-227
- 322 3. Burdge GC, Hoile SP, Lillycrop KA (2012) Epigenetics: are there implications for personalised nutrition? *Curr Opin Clin Nutr*  
323 *Metab Care* 15(5):442-447
- 324 4. Burdge GC, Lillycrop KA. (2010) Bridging the gap between epigenetics research and nutritional public health interventions.  
325 *Genome Medicine*, 2(11): 80
- 326 5. Burdge GC, Lillycrop KA, Phillips ES, *et al.* (2009) Folic acid supplementation during the juvenile-pubertal period in rats modifies  
327 the phenotype and epigenotype induced by prenatal nutrition. *J Nutr* 139(6), 1054–1060
- 328 6. Campión J, Milagro FI, Goyenechea E, *et al.* (2009) TNF-alpha promoter methylation as a predictive biomarker for weight-loss  
329 response. *Obesity (Silver Spring)*, 17(6):1293–1297

- 330 7. Casas R, Sacanella E, Urpí-Sardà M, *et al.* The effects of the mediterranean diet on biomarkers of vascular wall inflammation  
331 and plaque vulnerability in subjects with high risk for cardiovascular disease. A randomized trial. *PLoS One* 2010; 9(6): e100084
- 332 8. Ceccarelli V, Racanicchi S, Martelli MP, *et al.* (2011) Eicopentaenoic acid demethylates a single CpG that mediates expression  
333 of tumor suppressor CCAAT/enhancer-binding protein delta in U937 leukemia cells. *J Biol Chem*, 286(31):27092–27102
- 334 9. Chambers KF, Bacon JR, Kemsley EK, *et al.* (2009) Gene expression profile of primary prostate epithelial and stromal cells in  
335 response to sulforaphane or iberin exposure. *Prostate*, 69(13): 1411-1421
- 336 10. Choi SW, Friso S (2010) Epigenetics: a new bridge between nutrition and health. *Adv Nutr*, 1:8-16
- 337 11. Cordero P, Campión J, Milagro FI, *et al.* (2011) Leptin and TNF-alpha promoter methylation levels measured by MSP could  
338 predict the response to a low-calorie diet. *J Physiol Biochem*, 67(3):463–470
- 339 12. Corella D, Ordovás JM, Sorlí JV, *et al.* (2015) Effect of the Mediterranean Diet on DNA Methylation of Selected Genes in the  
340 PREDIMED-Valencia Intervention Trial. *The FASEB Journal*, 29(1): Suppl LB242
- 341 13. Corella D, Ortega-Azorín C, Coltell O, *et al.* (2016) Diabetes and aging are associated with lower methylation levels of the irisin  
342 (FNDC5) gene, whereas higher adherence to the Mediterranean diet and physical activity increased methylation of these CpG  
343 sites in the PREDIMED-Valencia Study. *Obesity Facts*, 9, Suppl 1: 121
- 344 14. Do Amaral CL, Milagro FI, Curi R, *et al.* (2014) DNA methylation pattern in overweight women under an energy-restricted diet  
345 supplemented with fish oil. *Biomed Res Int* 2014:675021
- 346 15. Estruch R, Martínez-González MA, Corella D, *et al.* (2006) Effects of a Mediterranean-style diet on cardiovascular risk factors:  
347 a randomized trial. *Ann Intern Med*, 145(1):1-11
- 348 16. Estruch R, Ros E, Salas-Salvadó J *et al.* (2013) Primary prevention of cardiovascular disease with a Mediterranean diet. *NEJM*  
349 368(14):1279-1290
- 350 17. Ferguson LR, De Caterina R, Görman U, *et al.* (2016) Guide and Position of the International Society of  
351 Nutrigenetics/Nutrigenomics on Personalized Nutrition: Part 1 – Fields of Precision Nutrition. *J Nutrigenet Nutrigenomics*  
352 9:12-27
- 353 18. Fraga MF, Ballestar E, Paz MF, *et al.* (2005) Epigenetic differences arise during the lifetime of monozygotic twins. *Proc Natl*  
354 *Acad Sci U S A*, 102(30):10604-10609
- 355 19. Goni L, Cuervo M, Milagro FI, *et al.* (2016) Future perspectives of personalized weight loss interventions based on nutrigenetic,  
356 epigenetic and metagenomic data. *J Nutr* [Epub ahead of print]
- 357 20. González-Terán B, Cortés JR, Manieri E *et al.* (2013) Eukaryotic elongation factor 2 controls TNF- $\alpha$  translation in LPS-induced  
358 hepatitis. *J Clin Invest*, 123(1): 164-178

- 359 21. Kiec-Wilk B, Sliwa A, Mikolajczyk M, *et al.* (2011) The CpG island methylation regulated expression of endothelial  
360 proangiogenic genes in response to  $\beta$ -carotene and arachidonic acid. *Nutr Cancer*; 63(7):1053-1063
- 361 22. Kohlmeier M, De Caterina R, Ferguson LR, *et al.* (2016) Guide and Position of the International Society of  
362 Nutrigenetics/Nutrigenomics on Personalized Nutrition: Part 2 - Ethics, Challenges and Endeavors of Precision Nutrition. *J*  
363 *Nutrigenet Nutrigenomics* 9:28-46
- 364 23. Kulkarni A, Dangat K, Kale A, *et al.* (2011) Effects of altered maternal folic acid, vitamin B12 and docosahexaenoic acid on  
365 placental global DNA methylation patterns in Wistar rats. *PLoS One*, 6(3):e17706
- 366 24. Li Q, Chen H. (2011) Epigenetic modifications of metastasis suppressor genes in colon cancer metastasis. *Epigenetics*, 6(7):849-  
367 852
- 368 25. Mansego ML, Milagro FI, Zulet MA, *et al.* (2015) Differential DNA methylation in relation to age and health risks of obesity.  
369 *Int J Mol Sci*, 16: 16816-16832
- 370 26. Martínez-González MA, Corella D, Salas-Salvadó J *et al.* (2012) Cohort Profile: Design and methods of the PREDIMED study.  
371 *Int J Epidemiol* 41(2):377-385
- 372 27. Martínez-González MA, Salas-Salvadó J, Estruch R, *et al.* (2015) Benefits of the Mediterranean Diet: Insights from the  
373 PREDIMED study. *Prog Cardiovasc Dis*, 58(1):50-60
- 374 28. Martino D, Saffery R. (2015) Characteristics of DNA methylation and gene expression in regulatory features on the Infinium  
375 450k Beadchip. *bioRxiv* 032862
- 376 29. Milagro FI, Campión J, García-Díaz DF, *et al.* (2009) High fat diet-induced obesity modifies the methylation pattern of leptin  
377 promoter in rats. *J Physiol Biochem*, 65(1):1-10
- 378 30. Milagro FI, Mansego ML, De Miguel C, *et al.* (2013) Dietary factors, epigenetic modifications and obesity outcomes: Progresses  
379 and perspectives. *Mol Aspects Med*, 34(4):782-812
- 380 31. Mitjavila MT, Fandos M, Salas-Salvadó J, *et al.* (2013) The Mediterranean diet improves the systemic lipid and DNA oxidative  
381 damage in metabolic syndrome individuals. A randomized, controlled trial. *Clin Nutr*, 32(2):172-178
- 382 32. Petro PD, Palou A, Bonet ML, *et al.* (2016) Cell-Autonomous Brown-Like Adipogenesis of Preadipocytes from Retinoblastoma  
383 Haploinsufficient Mice. *J Cell Physiol*, 231(9): 1941-1952
- 384 33. Reis BS, Lee K, Fanok MH *et al.* (2015) Leptin receptor signaling in T cells is required for Th17 differentiation. *J Immunol*,  
385 194(11): 5253-5260
- 386 34. RStudio Team (2015) RStudio: Integrated Development for R. RStudio, Inc., Boston, MA. Available: <http://www.rstudio.com/>
- 387 35. Salas-Salvadó J, Garcia-Arellano A, Estruch R, *et al.* Components of the Mediterranean-type food pattern and serum  
388 inflammatory markers among patients at high risk for cardiovascular disease. *Eur J Clin Nutr* 2008; 62(5): 651-659

- 389 36. Schottelius AJ, Zügel U, Döcke WD, *et al.* (2010) The role of mitogen-activated protein kinase-activated protein kinase 2 in the  
390 p38/TNF-alpha pathway of systemic and cutaneous inflammation. *J Invest Dermatol*, 130(2): 481-491
- 391 37. Schroder H, Fito M, Estruch R, *et al.* (2011) A short screener is valid for assessing Mediterranean diet adherence among older  
392 Spanish men and women. *J Nutr* 141, 1140–1145
- 393 38. Sharma S, Kelly TK, Jones PA (2010) Epigenetics in cancer. *Carcinogenesis*, 31(1):27-36
- 394 39. Sun Z, Cunningham J, Slager S, *et al.* (2015) Base resolution methylome profiling: considerations in platform selection, data  
395 preprocessing and analysis. *Epigenomics* 7(5): 813-828
- 396 40. Tammen SA, Friso S, Choi SW (2013) Epigenetics: the link between nature and nurture. *Mol Aspects Med*, 34(4):753-764
- 397 41. Touleimat N, Tost J (2012) Complete pipeline for Infinium® Human Methylation 450K BeadChip data processing using subset  
398 quantile normalization for accurate DNA methylation estimation. *Epigenomics* 4(3):325-341
- 399 42. Villegas R, Williams SM, Gao YT, *et al.* (2014) Genetic variation in the peroxisome proliferator-activated receptor (PPAR) and  
400 peroxisome proliferator-activated receptor gamma co-activator 1 (PGC1) gene families and type 2 diabetes. *Ann Hum Genet*,  
401 78(1): 23-32
- 402 43. Volkmar M, Dedeurwaerder S, Cunha DA, *et al.* (2012) DNA methylation profiling identifies epigenetic dysregulation in  
403 pancreatic islets from type 2 diabetic patients. *EMBO J* 31(6): 1405-1426
- 404 44. Wang Y, Iordanov H, Swietlicki EA, *et al.* (2005) Targeted intestinal overexpression of the immediate early gene *tis7* in  
405 transgenic mice increases triglyceride absorption and adiposity. *J Biol Chem*, 280(41): 34764-34775
- 406 45. Willett WC, Sacks F, Trichopoulos A, *et al.* (1995) Mediterranean diet pyramid: a cultural model for healthy eating. *Am J Clin*  
407 *Nutr*, 61(6 Suppl):1402S-1406S
- 408 46. Yang X, Han H, De Carvalho DD, *et al.* (2014) Gene body methylation can alter gene expression and is a therapeutic target in  
409 cancer. *Cancer cell* 26; 577-590
- 410 47. Yoshiko S, Hoyoku N. (2007) Fucoxanthin, a natural carotenoid, induces G1 arrest and GADD45 gene expression in human  
411 cancer cells. *In vivo*, 21(2): 305-309
- 412 48. Yue Y, Huang W, Liang J, *et al.* (2015) IL4I1 Is a Novel Regulator of M2 Macrophage Polarization That Can Inhibit T Cell  
413 Activation via L-Tryptophan and Arginine Depletion and IL-10 Production. *PLoS One*, 10(11):e0142979
- 414 49. Zhang Y, Hufnagel C, Eiden S, *et al.* (2001) Mechanisms for LEPR-mediated regulation of leptin expression in brown and white  
415 adipocytes in rat pups. *Physiol Genomics*; 4(3):189-199

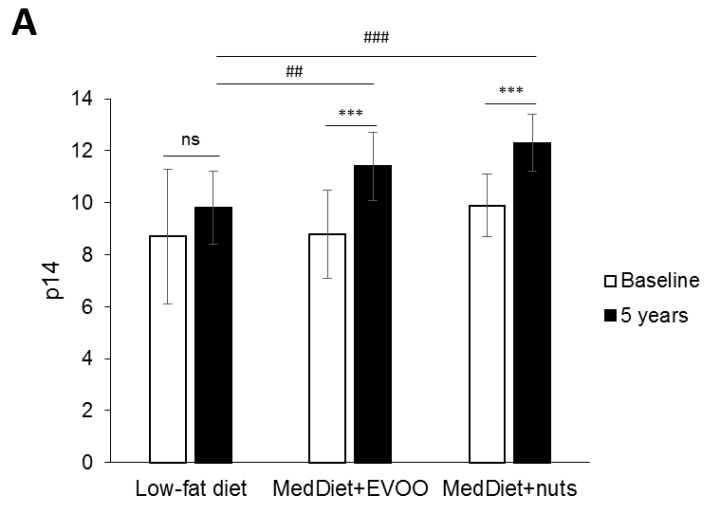
**Table 1**

	<b>Low-fat diet (n=12)</b>	<b>MedDiet + EVOO (n=12)</b>	<b>MedDiet + nuts (n=12)</b>	<b>p</b>
<b>Female, n (%) <sup>1</sup></b>	6 (50)	6 (50)	6 (50)	
<b>Age at baseline, years</b>	64.6 (3.9)	63.5 (1.7)	63.2 (2.1)	0.425
<b>Δ Weight, kg</b>	0.1 (2.7)	1.3 (4.9)	1.6 (4.4)	0.637
<b>Δ Waist circumference, cm</b>	0.0 (3.0)	3.7 (6.8)	0.8 (5.8)	0.213
<b>Δ BMI, kg/m<sup>2</sup></b>	0.1 (1.1)	0.4 (1.9)	0.7 (1.7)	0.312
<b>Δ Glycemia, mg/dl</b>	-1.7 (15.3)	-8.8 (53.9)	0.18 (37.6)	0.825
<b>Δ HDL-cholesterol, mg/dl</b>	2.7 (6.7)	-0.1 (8.0)	1.9 (13.9)	0.750
<b>Δ LDL-cholesterol, mg/dl</b>	-16.6 (24.7)	-9.0 (29.5)	5.8 (28.1)	0.185
<b>Δ Total cholesterol, mg/dl</b>	-16.1 (33.1)	-11.8 (33.4)	11.5 (36.9)	0.217
<b>Δ Triglycerides, mg/dl</b>	-10.9 (45.4)	-13.6 (63.7)	19.4 (22.4)	0.243
<b>Δ Systolic arterial pressure, mmHg</b>	1.2 (18.0)	0.9 (22.7)	4.8 (11.8)	0.740
<b>Δ Diastolic arterial pressure, mmHg</b>	0.1 (9.6)	-4.3 (10.2)	-0.7 (9.3)	0.509

Values are Mean (SD), except <sup>1</sup> for which is represented as n (%). P-values are achieved by an ANOVA test among the three groups. A significant p-value is considered p<0.05.

BMI: Body Mass Index; HDL: high-density cholesterol; LDL: low-density cholesterol; MedDiet: Mediterranean diet; EVOO: extra-virgin olive oil

Figure 1



**B**

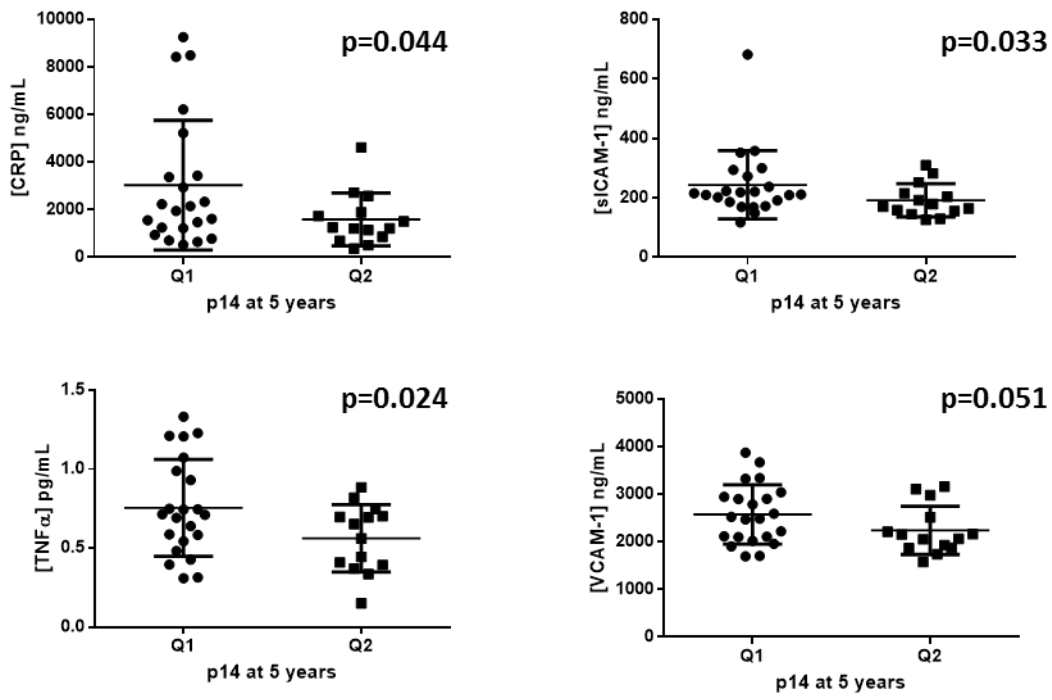
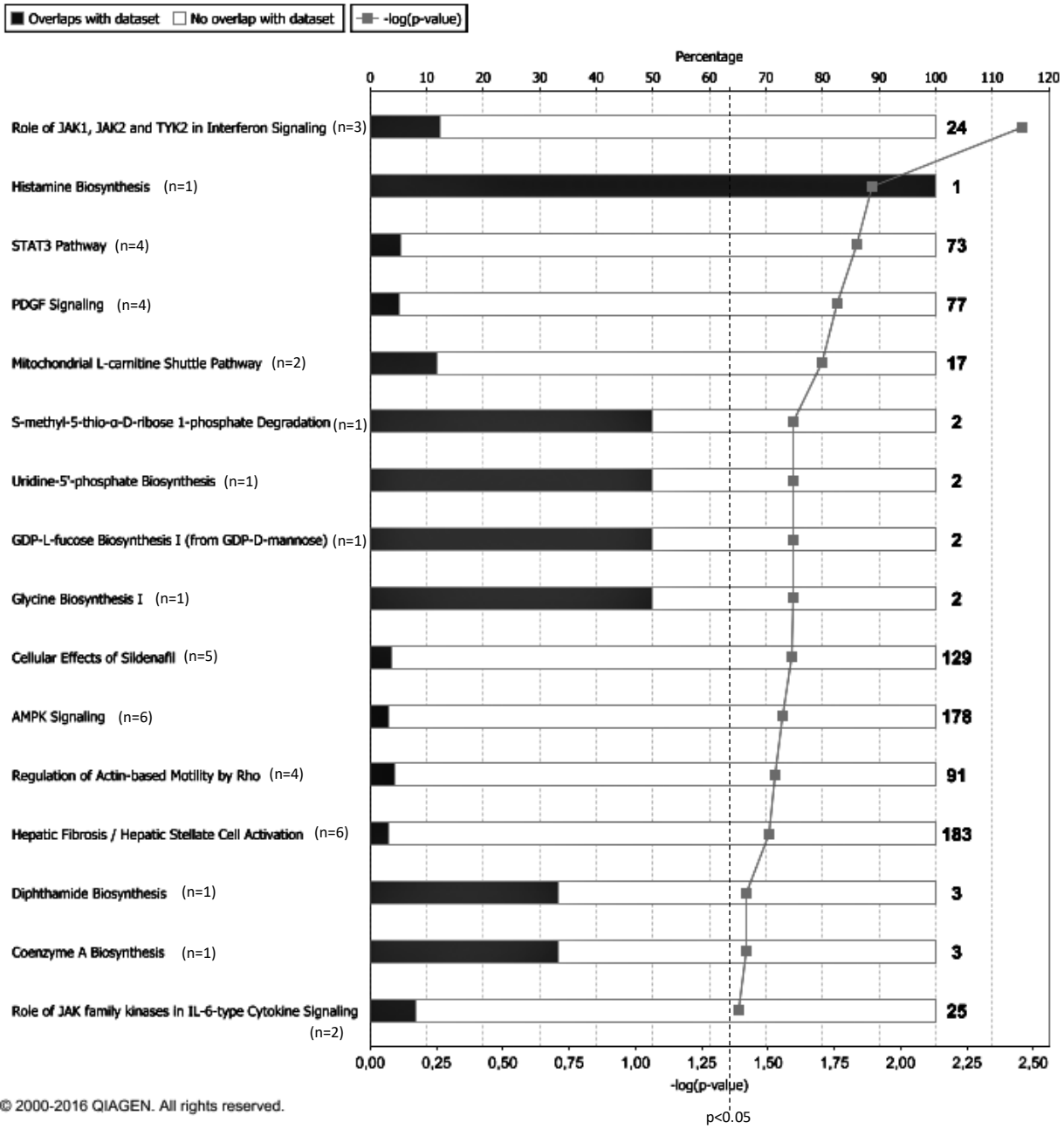
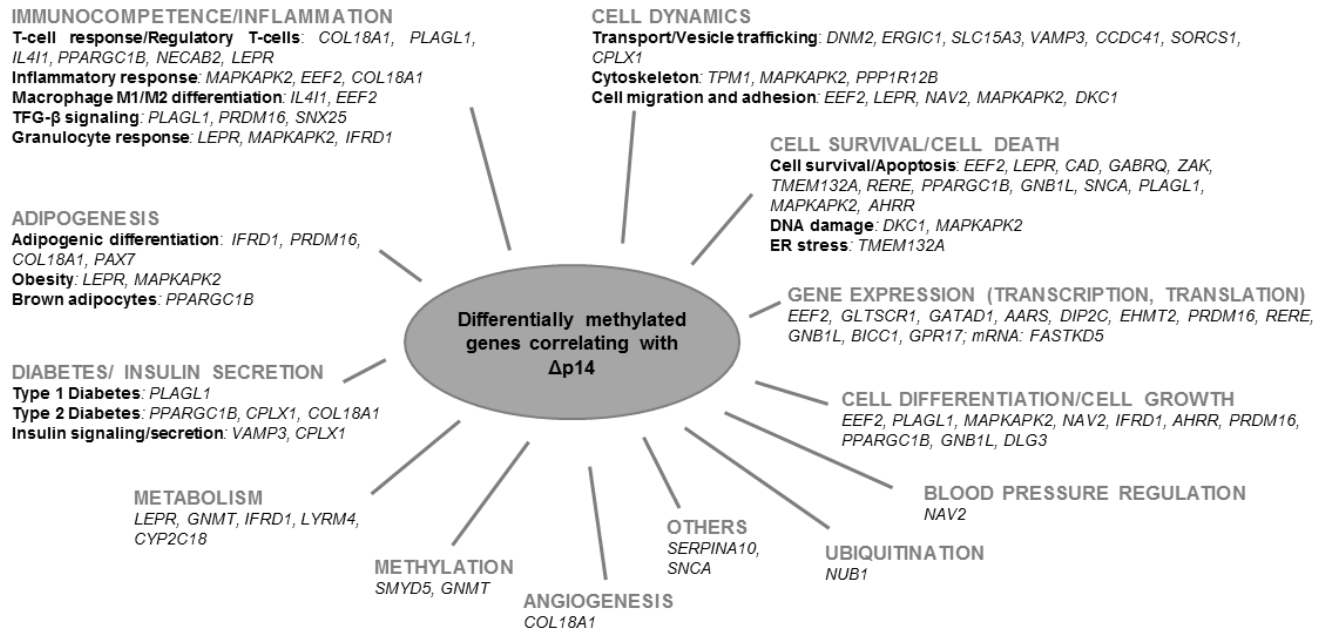




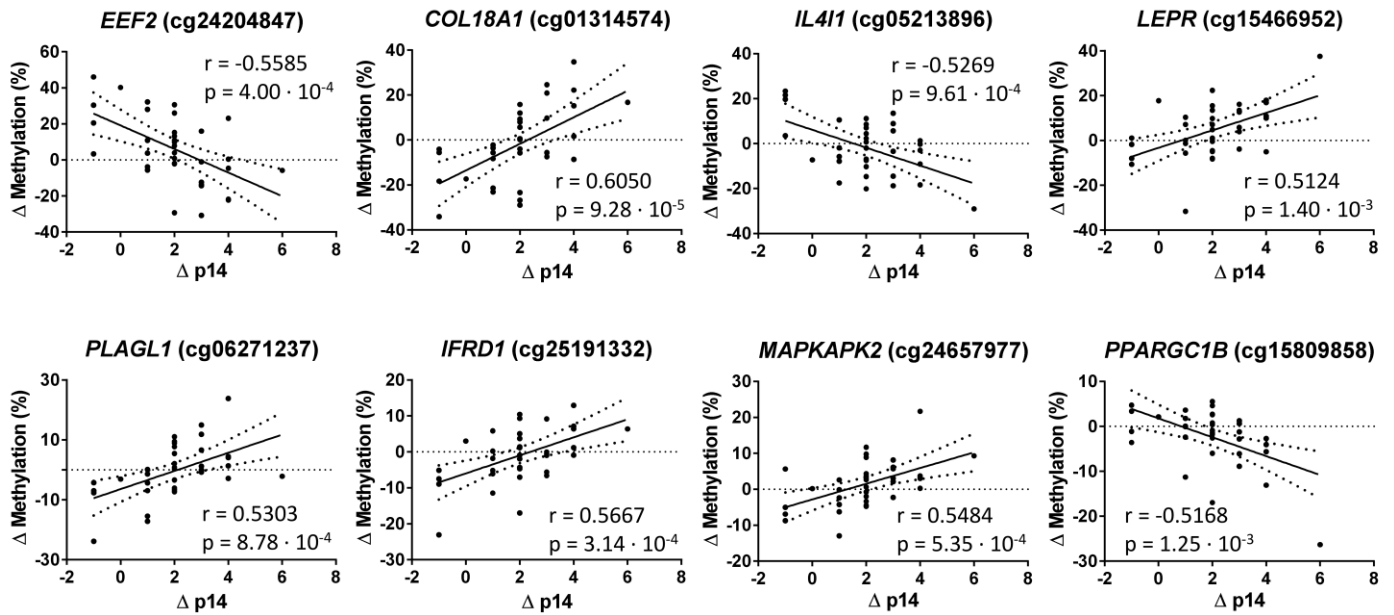
Figure 2



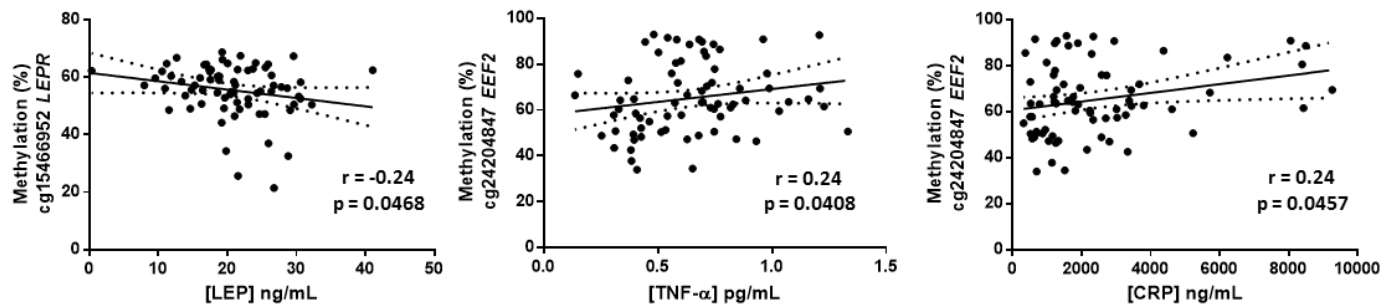
**Figure 3**



**Figure 4**



**Figure 5**



**Table 1: Characteristics of the study population and differences between the three dietary groups after five years of follow-up.**

**Figure 1: p14 values and inflammatory biomarkers after five years follow-up. A) p14 values at baseline and five years of each dietary group.** Values represent Mean  $\pm$  SD. Symbols represent \*\*\*  $p < 0.001$  (Student T test, 5 years vs. Baseline); ##  $p < 0.01$ , ###  $p < 0.001$  (ANOVA + Tukey's test, respect to control). **B) Protein concentration variation depending on p14 at five years.** p14 at five years is divided by the median in two groups, Q1 and Q2. Lines in the distribution represent mean and SD. One-tailed p-values were calculated by Student T-test or Mann-Whitney U test, when appropriate.  $p < 0.05$  was considered significant. CRP: C-reactive protein; MedDiet: Mediterranean diet; EVOO: extra-virgin olive oil; sICAM-1: soluble intercellular cell adhesion molecule 1; TNF- $\alpha$ : Tumor necrosis factor  $\alpha$ ; VCAM-1: vascular cell adhesion molecule 1.

**Figure 2. Canonical pathways associated with differentially methylated CpGs that correlate with  $\Delta$ p14 (Ingenuity Pathway Analysis).** The graph presents the canonical pathways ordered by  $-\log(p\text{-value})$  and the percentage of genes from our list (316 CpGs, in black) that are in one specific pathway (total number of genes in the right part of the graphs). In grey is represented the  $-\log(p\text{-value})$ , indicating that all of them are significant ( $p < 0.05$ ).

**Figure 3. Manual curation of top 50 genes.** The first 50 genes corresponding to the CpGs with higher standard deviation of the total CpGs that were differentially methylated and correlated with p14 changes ( $\Delta$ p14) are classified by biological functions after a bibliographic research.

**Figure 4: Correlation graphs (Pearson) of selected genes representing the association between differences in methylation ( $\Delta$  Methylation) and differences in adherence to MedDiet ( $\Delta$  p14).** Dot lines on both sides of the solid line (linear regression for correlation) represent 95% confidence band. *COL18A1*: Collagen Type XVIII Alpha 1; *EEF2*: Eukaryotic Elongation Factor 2; *IFRD1*: Interferon-related developmental regulator 1; *IL4I1*: Interleukin 4-induced gene-1; *LEPR*: Leptin receptor, *MAPKAPK2*: Mitogen-activated protein kinase (MAPK)-activated protein kinase 2; *PLAGL1*: Pleiomorphic adenoma gene-like 1; *PPARGC1B*: Peroxisome Proliferator-Activated Receptor Gamma, Coactivator 1 Beta.

**Figure 5: Statistically significant correlation graphs (Spearman) representing the association between methylation of a selected CpG with the protein concentration obtained by ELISA.** Dot lines on both sides of the solid line (linear regression for correlation) represent 95% confidence band. CRP: C-reactive protein; *EEF2*: Eukaryotic Elongation Factor 2; LEP: Leptin; *LEPR*: Leptin receptor; TNF- $\alpha$ : Tumor necrosis factor  $\alpha$ .