



Contents lists available at ScienceDirect

Health Policy

journal homepage: www.elsevier.com/locate/healthpol



Health policies for the reduction of obstetric interventions in singleton full-term births in Catalonia

Maria-Jesus Pueyo^{a,b,*}, Ramon Escuriet^c, M. Pérez-Botella^d, I. de Molina^e,
D. Ruíz-Berdun^f, S. Albert^g, S. Díaz^h, P. Torres-Capchaⁱ, V. Ortún^j

^a Ministry of Health, Generalitat de Catalunya, Barcelona, Spain

^b Department of Experimental and Health Sciences, Pompeu Fabra University, Barcelona, Spain

^c Mar University School of Nursing, Pompeu Fabra University, Barcelona, Spain

^d School of Community Health and Midwifery, University of Central Lancashire, Preston, UK

^e School of Nursing, Rovira i Virgili University, Tarragona, Spain

^f Faculty of Medicine, Alcalá University, Madrid, Spain

^g Hospital Sant Joan de Reus, Tarragona, Spain

^h Hospital Comarcal d'Ampostà, Tarragona, Spain

ⁱ PhD Programme in Paediatrics, Obstetrics and Gynaecology, Autonomous University of Barcelona, Barcelona, Spain

^j Faculty of Economic and Business Sciences, Pompeu Fabra University, Barcelona, Spain

ARTICLE INFO

Article history:

Received 9 January 2017

Received in revised form 18 January 2018

Accepted 26 January 2018

Keywords:

Cesarea

Obstetric interventions

Level of complexity

Volume of births

Non-medicalized delivery

Health policies

ABSTRACT

Aim: To explore the effect of hospital's characteristics in the proportion of obstetric interventions (OI) performed in singleton fullterm births (SFTB) in Catalonia (2010–2014), while incentives were employed to reduce C-sections.

Methods: Data about SFTB assisted at 42 public hospitals were extracted from the dataset of hospital discharges. Hospitals were classified according to the level of complexity, the volume of births attended, and the adoption of a non-medicalized delivery (NMD) strategy. The annual average change in the percentage for OI was calculated based on Poisson regression models.

Results: The rate of OI (35% of all SFTB) including C-sections (20.6%) remained stable through the period. Hospitals attending less complex cases had a lower average of OI, while hospitals attending lower volumes had the highest average. Higher levels of complexity increased the use of C-sections (+4% yearly) and forceps (+16%). The adoption of the NMD strategy decreased the rate of C-sections.

Conclusions: The proportion of OI, including C-sections, remained stable in spite of public incentives to reduce them. The adoption of the NMD strategy could help in decreasing the rate of OI. To reduce the OI rate, new strategies should be launched as the development of low-risk pregnancies units, alignment of incentives and hospital payment, increased value of incentives and encouragement of a cultural shift towards non-medicalized births.

© 2018 Elsevier B.V. All rights reserved.

1. Introduction

In recent years, the rate of surgical procedures carried out in order to assist childbirth has substantially increased [1]. Data recorded in different reports and international databases [2,3] show an increase in the rate of caesareans with high variability between countries.

In the prior assessment carried out in our environment, we found that the hospital's rate of C-sections and the use of instruments for assisting birth were related to the volume of assisted births in hospitals, as well as the type of financing [4]. Moreover, this previous work made clear the limitations of the information available to assess health provision during delivery. As a result, a specific study, supported by the Ministry of Health, has been launched in order to explore the birth outcomes of healthy women and to identify the profile of the professional assisting women during the intrapartum process (MidconBirth [5]).

The maternity care model proposed by the Catalan Ministry of Health promotes assistance based on the best evidence available with appropriate technology used in a rational and sustainable way

* Corresponding author at: Travessera de les Corts, 131-159, 08028, Barcelona, Spain.

E-mail address: mjpueyo@gencat.cat (M.-J. Pueyo).

for avoiding unnecessary procedures [6]. In Catalonia, there is a separation between the public insurer, which guarantees universal coverage to all citizens, and the healthcare providers. The relationship between the public insurer and the hospitals as providers is established based on an annual contract. The financing takes into account the case-mix index, based on the groups related to diagnosis system (AP-DRG), attended in each hospital [7]. The DRG assigned to C-sections raises the complexity of the case-mix attended and therefore raises the budget allocated to each hospital. Obstetric discharges are about 14% of all discharges. Every year until 2014, around 0.8% of every hospital's budget was linked to the achievement of 10–12 objectives. Since 2006, one of the objectives was to maintain the rate of C-section lower than 21%. In addition, in 2008, a new strategy for increasing non-medicalized deliveries (NMD) on maternity care was launched, so technical and economic support for hospitals was offered for adapting their infrastructures to natural non-medicalized deliveries, and for creating specific spaces for assisting healthy women during birth.

The aim of this study is to explore the evolution in the proportion of obstetric surgical procedures (C-section, forceps, vacuum and instrumented births without specifying instrument type) performed in singleton full-term births (SFTB) occurred during 2010–2014 in Catalonia while two strategies for reducing the rate of obstetric interventions (OI) were applied.

2. Material and methods

To explore the evolution in the proportion of OI performed in SFTB occurred during 2010–2014, data about all singleton births between 37 and 42 weeks of pregnancy assisted at 42 publicly financed maternity hospitals were extracted from the Minimum Basic Data Set that collects information of hospital discharges using ICD-9-MC codes. The hospitals where births were assisted were classified according to the level of complexity attended into five categories [8]: Group I (low complexity); Group IIA (medium complexity); Group IIB (medium-high complexity); Group IIIA (high complexity); Group IIIB (very high complexity).

A second grouping was defined based on the volume of annual births assisted in hospitals. This grouping considered four strata: Stratum 1 (600 births or less annually); Stratum 2 (between 601 and 1200 births annually); Stratum 3 (from 1201 to 2400 births annually), and Stratum 4 (more than 2400 births annually). In addition, hospitals were classified in two categories according to the adoption of the NMD strategy or not.

Table 1 Total number of singleton full-term births and overall percentage of obstetric interventions (OI) distribution according to hospitals' level of complexity, volume of births and adoption of the NMD strategy. Catalonia 2010–2014.

	2010		2011		2012		2013		2014		OI	
	N	% all births	N	% all births	N	% all births	N	% all births	N	% all births	%	95%CI
Complexity												
Group I	15988	30.9	16163	32.5	15288	32.7	14412	31.3	13858	33.0	32.5	(32.2–32.8)
Group IIA	7625	14.7	7343	14.8	6976	14.9	6744	14.6	6332	15.1	36.6	(36.1–37.1)
Group IIB	9318	18.0	8968	18.1	8561	18.3	8306	18.0	6667	15.9	33.0	(32.6–33.5)
Group IIIA	12469	24.1	11431	23.0	10565	22.6	10757	23.4	9930	23.7	38.4	(38.0–38.8)
Group IIIB	6336	12.2	5768	11.6	5341	11.4	5817	12.6	5200	12.4	35.8	(35.3–36.4)
Total	51736	100	49673	100	46731	100	46036	100	41987	100		
Volume												
S1	2138	4.1	2071	4.2	1914	4.1	2404	5.2	2260	5.4	36.7	(35.9–37.6)
S2	8974	17.3	11451	23.1	11786	25.2	10645	23.1	14660	34.9	31.2	(30.7–31.6)
S3	25418	49.1	21948	44.2	22214	47.5	21588	46.9	17116	40.8	36.0	(35.7–36.2)
S4	15206	29.4	14203	28.6	10817	23.1	11399	24.8	7951	18.9	33.9	(33.6–34.3)
Total	51736	100	49673	100	46731	100	46036	100	41987	100		
NMD Strategy												
NMD	32863	63.5	44109	88.8	41563	88.9	41213	89.5	37619	89.6	35.1	(34.9–35.3)
Non NMD	18873	36.5	5564	11.2	5168	11.1	4823	10.5	4368	10.4	34.7	(34.3–35.2)
Total	51736	100	49673	100	46731	100	46036	100	41987	100		

This study was exempt from Ministry of Health of the Government of Catalonia Ethics Committee review as it used publicly available, anonymous data.

3. Statistical analysis

The proportion and the confidence interval (CI 95%) was calculated for the OI that were explored (C-section, forceps, vacuum and instrumented births without specifying instrument type) in each group of hospitals and for each year studied, considering as the denominator the total number of SFTB assisted. The annual average change in the incidence was calculated based on Poisson regression models or negative binomial regression in the case of vacuum and other types as the variance was greater than the average (overdispersion) [9]. The log of total births was included as a term of exposure. Regression models were adjusted by the level of complexity, the volume of births and the adoption of the NMD strategy. All of the analyses were carried out with Stata v13.

4. Results

From 2010 to 2014, there were 236,163 discharges for live SFTB. Table 1 shows the distribution of the SFTB in hospitals grouped according to their characteristics. Hospitals in Group I attended around one third of all births. The number of births assisted in each level of complexity remained stable throughout all the years. Hospitals from stratum 3 cared for almost 48% of all births, and the figures were stable throughout the period. Hospitals included in the NMD strategy attended about 63% of deliveries in 2010. Since 2011, the percentage increased to 88%.

The total number of births with OI were 82,742 (35.0%). The rate of C-sections was 20.6%, forceps 8.3%, vacuum 2.8% and non-specified 3.4%. Fig. 1 shows the evolution of each one of the OI in each level of complexity. OI proportions were stable throughout the period within each level of complexity. Hospitals in Groups I and IIB had the lower overall average of OI in these five years (below 34%), while group IIIA had the highest rate (38.4%). The percentage of C-sections was greater in Groups IIIA and IIIB, which correspond to hospitals of high and very high complexity, with an upward trend. The percentage was lower and stable in Group IIB. The use of forceps was higher in Groups IIIA and IIIB with a decrease in their use. Group IIB showed the more pronounced decrease in the use of forceps from 8.5% to 5.8%. The use of vacuum increased through-

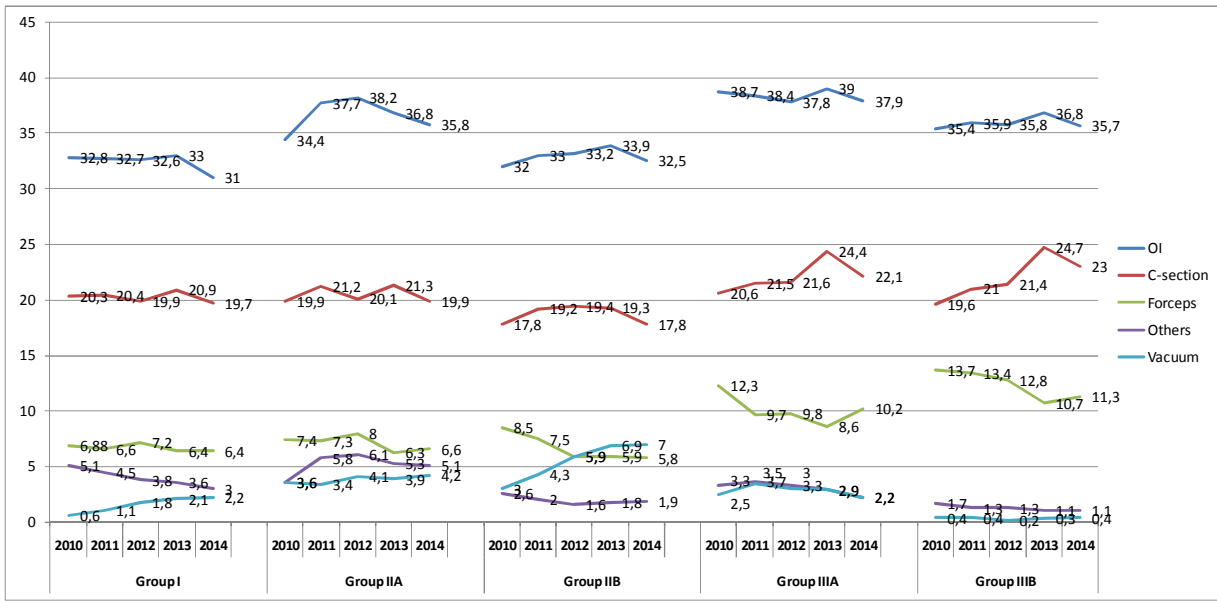


Fig. 1. C-section rate and instrumental births rate evolution for 2010–2014 by hospital level of complexity. Singleton full-term births.

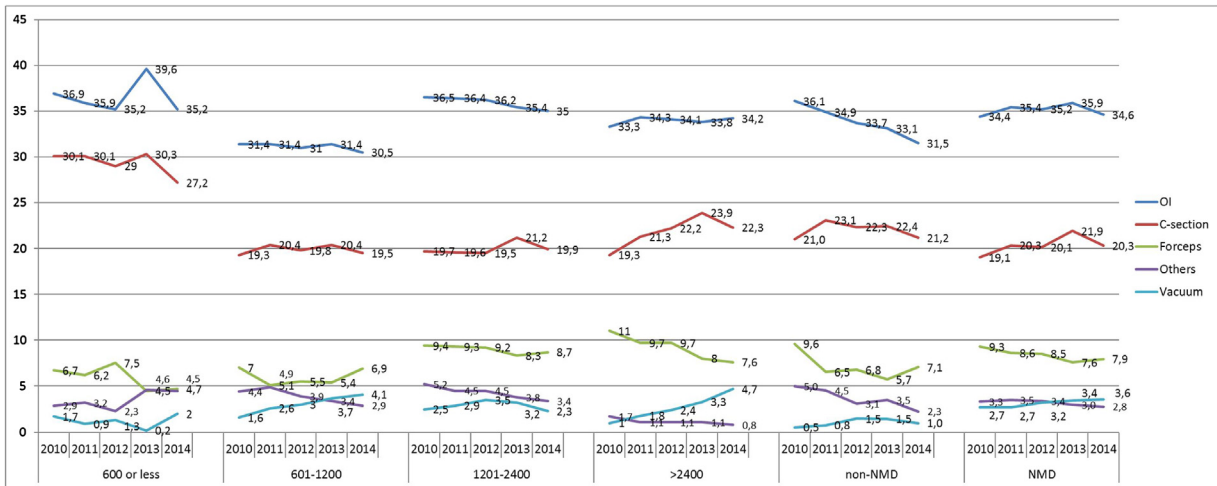


Fig. 2. C-section rate and instrumental births rate evolution for 2010–2014 by volume of births attended and the adoption of the NMD strategy. Singleton full-term births.

out the period in all levels except in the Group IIIA with the more pronounced increase in the Group IIB, from 3.6% to 7%.

The evolution of the OI proportion was stable in each one of the volume strata (Fig. 2). Stratum 2 had the lower rate of OI (below 31.4%), whilst Stratum 1 showed the highest percentages. The rate of C-sections was highest in Stratum 1 (600 or less births) and, in Stratum 4 the rate increased by 3%. The use of forceps was more frequent in Stratum 3 and 4 with a downward trend over time. The use of vacuum increased in all the strata except Stratum 3 throughout the period under study.

The rate of OI in the hospitals that adopted the NMD strategy was stable, while in the non-NMD hospitals the rate decreased from 36.1% to 31.5%. Those involved in the NMD strategy had a lower rate of C-sections since 2010–2013 but, since then, there was no difference between both types of hospitals (Fig. 2). The use of forceps and the use of vacuum was higher in NMD hospitals, in the last case with an upward trend.

The multivariate regression analysis showed that OI remained stable throughout the period (Fig. 3). The rate of OI increased with higher levels of complexity (+13%), while large volumes of births and the adoption of the NMD strategy were associated with a

decreasing rate. C-sections remained steady throughout the period although, as level of complexity of cases attended increased, the C-section rate increased too (about 4% annually). The adoption of the NMD strategy decreased the use of C-section by 9% (Fig. 3). The use of forceps decreased throughout the period by nearly 5% year on year, although their use increased as level of complexity did (+16%). The use of vacuum was stable throughout the period but the use of the NMD strategy was the main factor for its increase in some hospitals (IRR 3.71) (Regression values available at supplementary material).

5. Discussion

This study analyses data regarding OI in SFTB in order to ascertain whether the volume of births attended, their level of complexity, the incentives applied or the adherence to the NMD strategy had any effect over the rate of OI. Our results show a stabilisation in the rate of OI including C-sections through the period, a decrease in the use of forceps and an increase in the use of vacuum. These results are aligned with other studies [10] conducted after implementing clinical practical guidelines for decreasing unrec-

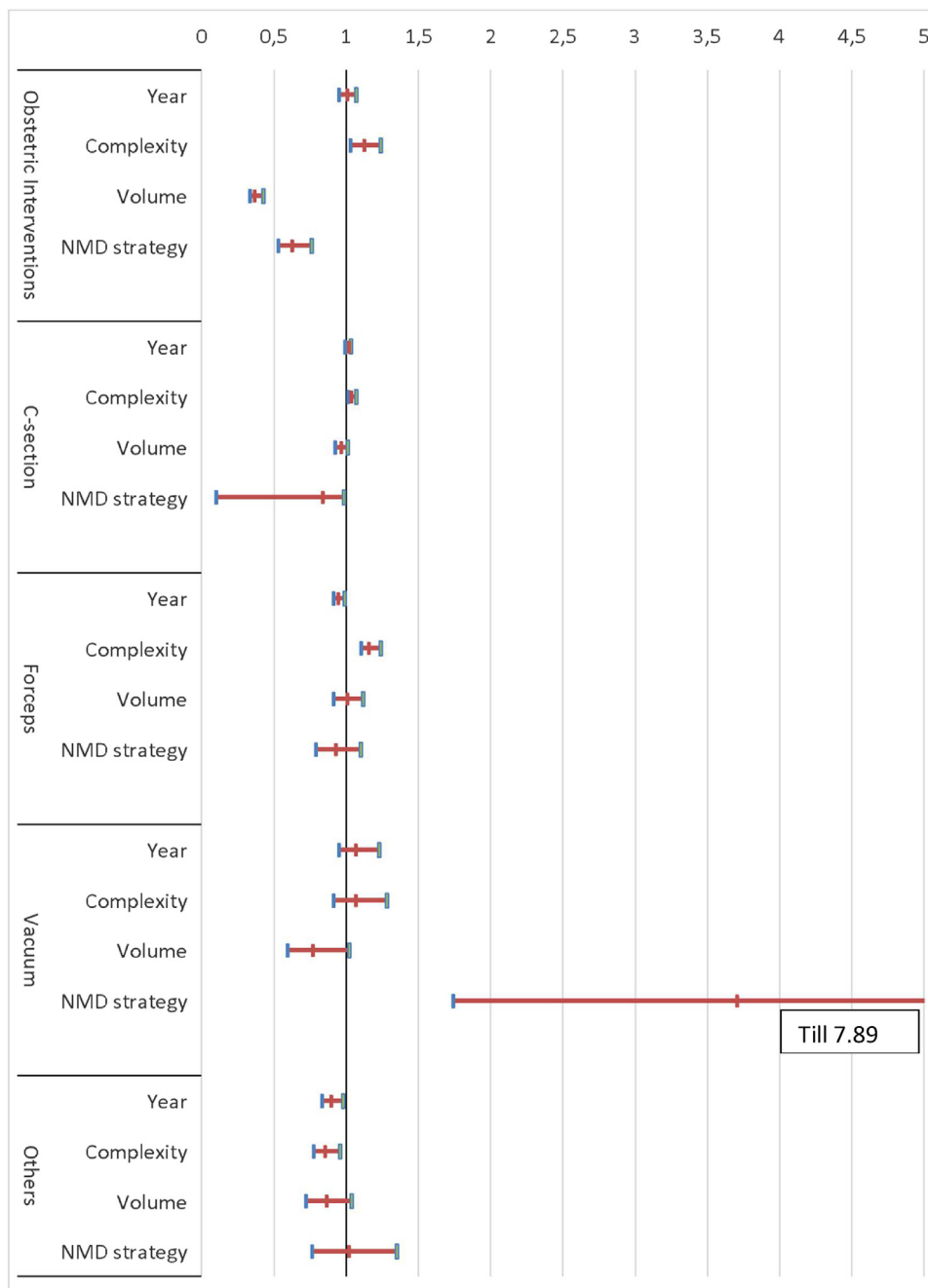


Fig. 3. Annual average change (incidence rate ratio and 95% CI) for obstetric interventions adjusted by level of complexity, volume of deliveries and the adoption of the NMD strategy. Singleton full-term births 2010–2014.

essary interventions, which identified a decrease in instrumented births at the expense of an increase in C-sections. In our results, the decrease in the use of forceps is at the expense of the increase in the use of vacuum.

The number of SFTB without any instrument, around of 65% of the deliveries, can be considered as normal births. These results are similar to the rates obtained in Dowell's study [11], which found that half of the women that gave birth in obstetric units in England were classified as low-risk and that the rate of normal births among these women was 60%.

Several studies show that OI, mainly C-sections, have increased in recent years, [12] especially in private healthcare services [13–15]. In our country, a preliminary study showed a significant difference in the rates of OI between public and private services [4]. Apart from financing, some hospital's characteristics could explain

the variability found in the rate of OI in our study. High rates of OI could be expected in hospitals attending complex cases. However, high rates of OI, such as C-sections, are unexpected in the hospitals attending less complex cases as those in level I or IIA. The rate of OI should be stable among the different strata, but surprisingly, hospitals with less activity present a higher rate of OI and C-sections. The rate of OI including C-sections decreases when hospitals adopt the NMD strategy although the rate of vacuum increases. The rates of OI and C-sections did not change through the period in spite of the incentives employed.

These results open a debate on the effect that the organisation of the services may have in our context. All the public maternity units considered in our study are obstetric units highly technically oriented, that can attend high risk as well as low risk pregnancies and births. That raises the question about the dubious benefits of

giving birth in these mixed environments, as recently studies have shown positive health results when healthy women are treated in specific units that are separated from the conventional obstetric units [16–19].

The result also challenges the public policy-makers' strategy applied in our country based in economic incentives for reducing C-sections. The strategy has failed as the rate of caesareans has remained over 24% without achieving a downward trend. The observed stabilisation in the last five years is similar to that observed in the rest of Spain [3] although our population is restricted to live SFTB. It seems plausible to assume that, needing to fulfil as many as ten to twelve goals in order to receive the incentives almost certainly decreased the value of each one of these incentives. Moreover, the value of the incentives might not offset the value of the budget increase due to the complexity in the case-mix, in which C-sections play a role. Besides, some hospitals passed on the incentives to the obstetricians themselves, while others did not. On the contrary, it seems that the adherence to the NMD strategy could be an incentive for reducing the rate of C-sections. This makes sense since its adoption implies, not only the revision of the infrastructures, but also a cultural change. However, as our results show, the NMD strategy does not work for reducing the rate of all OI.

The administrative origin of the data is the main limitation of this study. First, the lack of some clinical factors do not allow identifying low-risk pregnancies tributaries of non-medicalized deliveries [20,21]. Second, the recorded data in the hospital discharge reports are not exhaustive in some procedures so this study has not explored other frequent OI such as induction of labour or use of epidural analgesia [4].

To reduce OI, mainly C-sections, the public insurer should adopt different strategies. First the general adoption of the NMD strategy, the implementation of evidence-based care for intrapartum routine [22], and the organisation of specific units to cater for low-risk pregnancies mainly in the hospitals with less activity. Second, considering for payment the tariff of C-sections as the same as vaginal deliveries, although they are in different DRG groups, in order to align the incentives and the DRG-based payment. In this case, it might be advisable to keep in mind that about 15% of Caesarean sections are the recommended percentage. Third, increasing the monetary value of the incentives and passing on the incentives to the professionals. Finally, encouraging the already incipient cultural and social change that promotes the participation of women in decision-making demanding a more natural birth [23]

6. Conclusions

In Catalonia, the proportion of caesareans remained stable through 2010–2014, while the use of forceps fell. OI increased with the increase in complexity of births attended and it also increased with low volumes of births. The adoption of the NMD strategy decreased the rate of C-sections and increased the use of vacuum. The public health insurer should develop new strategies for achieving a lower rate of OI and C-sections as monetary incentives have proved to be non-effective.

Funding

This work has not received any funding.

Conflict of interests

None declared.

Acknowledgments

This work contributes to COST Action 1405 "BIRTH" and the MidconBirth study.

Appendix A. Supplementary data

Supplementary data associated with this article can be found, in the online version, at <https://doi.org/10.1016/j.healthpol.2018.01.016>.

References

- [1] Macfarlane AJ, Blondel B, Mohangoo AD, Cuttini M, Nijhuis J, Novak Z, et al. Wide differences in mode of delivery within Europe: risk-stratified analyses of aggregated routine data from the Euro-Peristat study. *BJOG* 2013;120(October (11)):1356–65.
- [2] EURO-PERISTAT project with SCPE and EUROCAT. European perinatal health report. The health and care of pregnant women and babies in Europe in 2010. May 2013. Available at: www.europeristat.com.
- [3] OECD. Caesarean sections. A: health at a glance 2015: OECD indicators. Paris: OECD Publishing; 2015.
- [4] Escuriet R, Pueyo M, Biescas H, Colls C, Espiga I, White J, et al. Obstetric interventions in two groups of hospitals in Catalonia: a cross-sectional study. *BMC Pregnancy Childbirth* 2014;14:143.
- [5] Escuriet R. Midwives contribution to normal childbirth care: cross-sectional study in public hospitals in Catalonia; 2018. <http://dx.doi.org/10.1186/ISRCTN17833269>.
- [6] Generalitat de Catalunya. Departament de Salut, Pla de salut de Catalunya 2016–2020. [Health Plan for Catalonia 2016–20] Direcció General de Planificació en Salut. Barcelona: Generalitat de Catalunya; 2016. [Accessed December 10, 2016]. Available at: http://salutweb.gencat.cat/ca/el.departament/Pla_salut/pla-de-salut-2016-2020/.
- [7] Cots F, Salvador X, Chiarello P, Bustins M, Castells X. Spain: a case study on diversity of DRG use—the catalan experience. In: Busse R, Geissler A, Quentin W, Wiley M, editors. *Diagnosis-related groups in Europe, moving towards transparency, efficiency and quality in hospitals*. Maidenhead (England): McGraw Hill Education; 2011. p. 432–54.
- [8] Generalitat de Catalunya. Departament de Salut Pla estratègic d'ordenació de l'atenció maternoinfantil als hospitals de la xarxa d'utilització pública de Catalunya. [Strategic plan for management of maternal care in public hospitals of Catalonia] Direcció General de Planificació i Regulació. Barcelona: Generalitat de Catalunya; 2007. [Accessed December 10, 2017]. Available at: http://salutweb.gencat.cat/web/content/home/ambits.tematics/linies.dactuacio/model.assistencial/ordenacio.cartera.i.serveis_sanitaris/pla-estrategic.dordenacio.maternoinfantil.i.atencio.salut.sexual.i.reproductiva/que.es/documents/plaestra2008.pdf.
- [9] Woodward M. *Epidemiology study design and data analysis*, 3rd ed. Boca Raton (FL): CRC Press; 2014.
- [10] Danilack VA, Botti JJ, Roach JJ, Savitz DA, Muri JH, Caldwell DL. Changes in delivery methods at specialty care in the United States between 2006 and 2010. *Journal of Perinatology* 2013;33(12):919–23.
- [11] Dowell M. Normal birth rates for England. *Perspective-NCT's Journal on Preparing Parents for Birth and Early Parenthood* 2012;(September (16)):16–7.
- [12] McPherson K, Gon G, Scott M. International variations in a selected number of surgical procedures. In: *OECD health working paper No. 61*. Paris: OECD; 2013.
- [13] Roberts CL, Tracy S, Peat B. Rates of obstetric interventions among private and public patients in Australia: population-based descriptive study. *BMJ* 2000;321(7254):137–41.
- [14] Gibbons L, Belizán JM, Lauer JA, Betrán AP, Merialdi M, Althabe F. The global numbers and costs of additionally needed and unnecessary Caesarean sections performed per year: overuse as a barrier to universal coverage. In: *World health report 2010*. Geneva: World Health Organization; 2010. p. 1–31.
- [15] Lutomski JE, Murphy M, Devane D, Meaney S, Greene RA. Private health care coverage and increased risk of obstetric intervention. *BMC Pregnancy Childbirth* 2014;14(January):13.
- [16] Rowe R, Townsend JL, Brocklehurst P, Knight M, Macfarlane AJ, McCourt C, et al. Service configuration, unit characteristics and variation in intervention rates in a national sample of obstetric units in England: an exploratory analysis. *BMJ Open* 2014;4(5):e005551.
- [17] Sutcliffe K, Caird J, Kavanagh J, Rees R, Oliver K, Dickson K, et al. Comparing midwife-led and doctor-led maternity care: a systematic review of reviews. *Journal of Advanced Nursing* 2012;68(November (11)):2376–86.
- [18] Scarf V, Catling C, Viney R, Homer C. Costing alternative birth settings for women at low risk of complications: a systematic review. *PLoS One* 2016;11(February (2)):e0149463.
- [19] Sandall J, Soltani H, Gates S, Shennan A, Devane D. Midwife-led continuity models versus other models of care for childbearing women. *Cochrane Database Systematic Reviews* 2016;(4):CD004667.
- [20] Escuriet R, White J, Beeckman K, Frith L, Leon-Larios F, Loytved C, et al. EU COST Action IS0907 'Childbirth Cultures, Concerns, and Consequences'. Assessing the

- performance of maternity care in Europe: a critical exploration of tools and indicators. BMC Health Services Research 2015;15:491.
- [21] Torloni MR, Betran AP, Souza JP, Widmer M, Allen T, Gulmezoglu M, et al. Classifications for cesarean section: a systematic review. PLoS One 2011;6.
- [22] Miller S, Abalos E, Chamillard M, Ciapponi A, Colaci D, Comandé D, et al. Beyond too little, too late and too much, too soon: a pathway towards evidence-based, respectful maternity care worldwide. The Lancet 2016;(September), [http://dx.doi.org/10.1016/S0140-6736\(16\)31472-6](http://dx.doi.org/10.1016/S0140-6736(16)31472-6).
- [23] Simkin P. Birth plans: after 25 years, women still want to be heard. Birth 2007;34(March (1)), 49-5.